

Tools for Supported Decision Making

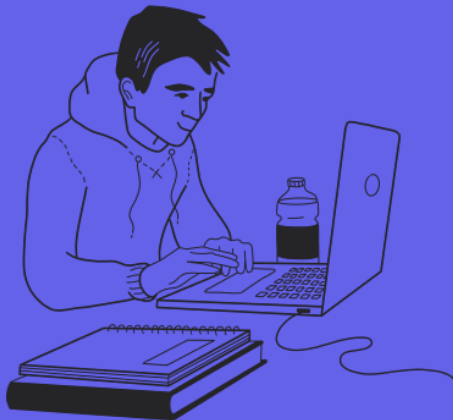
with Mary Shehan

Wednesday, February 12, 2025

12:00pm to 1:30pm

[Register at tinyurl.com/37mdpn8h](https://tinyurl.com/37mdpn8h)

In partnership with the Michigan
Developmental Disabilities Council



Every person has the right to make life decisions, to direct their life, and to be treated with dignity. Multiple avenues are available to support individuals to make decisions and direct their own life. We will discuss a variety of tools that can be used to support people in decision-making while retaining their rights.

Join Mary Shehan to dive into tools that can be used to address concerns people have about young adults' decision-making. This will be hands-on learning with tools you can start using today. As we move through an example scenario you can test the tools for yourself or your loved one.

- Gain a basic understanding of Supported Decision-Making
- Understand the impacts of guardianship and the benefits Supported Decision-Making
- Explore tools that can be used to support decision-making.
- Discuss how to integrate Support Decision-Making ideas into the IEP

Who should attend? Families with a child or young adult with a disability, self-advocates, school staff, other community members.

Questions? info@michiganallianceforfamilies.org

